

A vibrant, cartoon-style illustration of a rainforest scene. In the foreground, a large, moss-covered tree trunk lies horizontally across the frame. To the right, several tall, slender palm trees with feathery fronds stand upright. The ground is covered in lush green moss and small plants. In the background, more trees and foliage are visible, creating a dense forest atmosphere. The title 'Rainforest Information' is centered in the upper half of the image.

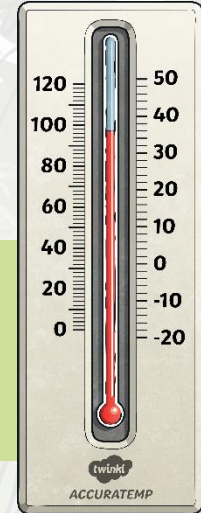
Rainforest Information





The Tree Tops

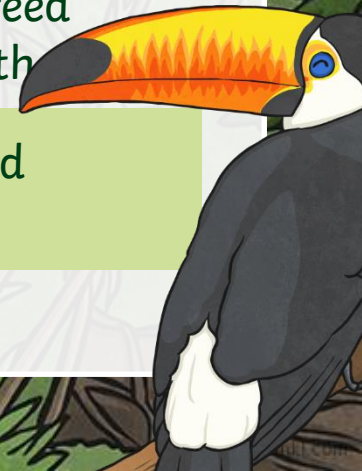
High up in the tree tops it is sunny and warm. There is no winter in the rainforest, so there are leaves, flowers and fruits to eat all year around.



Langurs are leaf-eating monkeys that live in the tree tops. Where there are leaves, there are bound to be caterpillars and the rainforest is full of glorious butterflies.



Iguanas are leaf-eating lizards that climb up to feed and sunbath



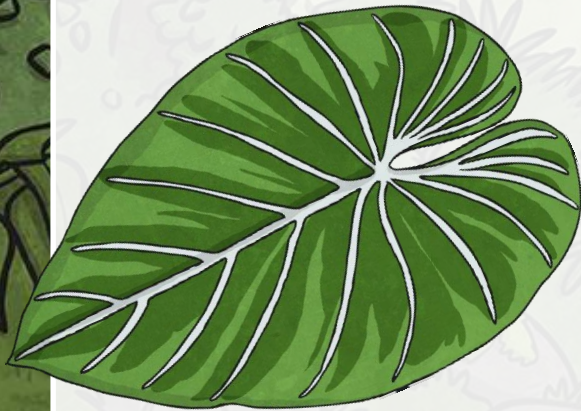
There are wonderful fruits in the tree tops. Toucans, hornbills and parrots love to eat them and so do spider monkeys.

The Tree Tops

Eagles soar above the canopy looking for birds and monkeys to eat.



Many of the animals which live in the tree tops never come down to the ground. If they did, they might not be able to climb back up the smooth tree-trunks.



Even ants climb all the way up here to pick leaves and take them down to their nests under the ground. They don't eat the leaves but use them to grow mushrooms to eat.

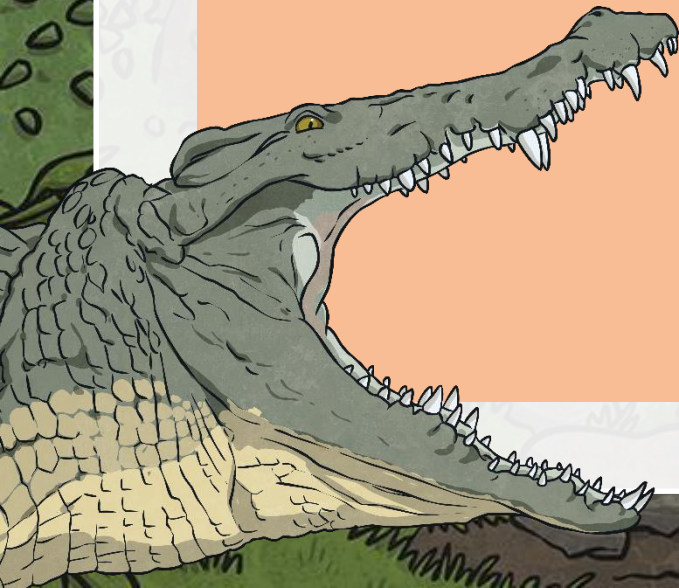
Hunters and Killers

Predators have to catch and kill other animals to survive.

They need to detect their prey before it sees them. They then stalk, ambush or outrun it before it escapes, incapacitating it before it can do them harm.

Predators have very acute senses. Predators who hunt during the day rely on their brilliant eyesight to find prey. Nocturnal hunters use other skills such as hearing and smell or the ability to detect vibrations made by approaching animals.

Prey animals have their own defences and means of avoiding capture, such as camouflage.



Hunters and Killers

Red-Kneed Tarantula

As well as dry rocky places, the red-kneed tarantula lives in humid forests. During the day, it stays in its silk-lined burrow. After dark, it emerges to hunt for large insects or small invertebrates. It injects prey with venom that quickly causes paralysis.



Leopard

The leopard hunts by leaping on prey from above and killing it with a bite to the throat or neck.



Nile Crocodile

Lurking unseen in the water, crocodiles are capable of surprising bursts of speed as they lunge forwards to grab a drinking animal by the muzzle. They kill their catch by dragging it underwater until it drowns.



Disguise and Warning

Animals and insects use camouflage in an effort to avoid being eaten. Colour and shape either make an animal indistinguishable from its background or trick a predator into thinking it is dealing with something larger and more dangerous.

Some animals have colours and patterns that closely match their background. Some patterns seem bold and conspicuous but actually break up the animal's outline, making it impossible to see against the mosaic of leaves and twigs.

Another kind of camouflage is mimicry, with insects looking like twigs, bark and leaves. The disguise of many insects is so good, rather than wasting their time looking for them, flocks of birds just wave through the forest. Whatever small creatures one bird knocks off, the bird behind snaps up.



Disguise and Warning

Camouflage cat

Light-coloured fur with dark stripes, spots or blotches imitates the dappled effect of sunlight in the dense vegetation of the rainforest. Tigers rely on their ability to remain unseen as they stalk their prey.



Poison arrow frog

The bright colours of this frog warn other animals that it is poisonous



Butterflies

Many butterflies have vivid patterns to warn predators that they taste unpleasant.

Some harmless butterflies copy the appearance of bad tasting ones to trick predators into leaving them alone.



Among the Branches

Under the tree tops canopy, the vines wind among the tree branches. Everything that lives here has to be an expert climber.

Sloth

They move very slowly. They hang underneath branches, hooked on by their long curved claws. Sloths are rarely the right way up. Tiny plants live right inside the hairs on a sloth, this helps to make them hard to see among the leaves.



Flying Squirrels

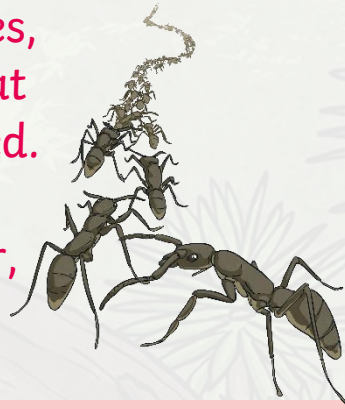
They sleep in the day in tree holes. They can glide as far as 100 metres between trees. At dusk, they climb into the tree tops to feed on plant shoots, leaves and nuts.

Some animals can glide from tree to tree instead of leaping. Gliders are easy targets for birds so many of them are patterned to blend in with their surroundings. Most of them only come out at night.



On the Ground

On the ground, it is warm and damp. Everything that falls from above - leaves, fruit, animals and droppings, are gobbled up by the ants, giant millipedes, beetles and other creatures that swarm there. Nothing is wasted. Even fallen trees are eaten up by termites. On the forest floor, scavenging is a way of life.



Because it is so dark, many forest plants and creatures are brightly coloured so that they can be seen.

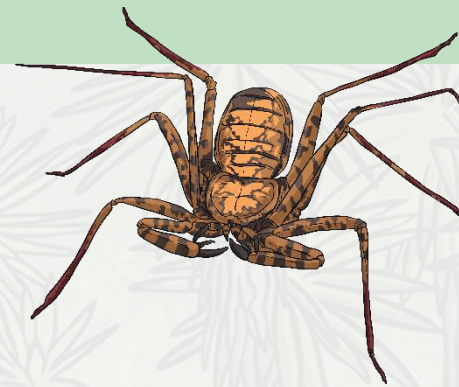
There are not many large animals down here, except for a few scavengers such as wild pigs and tapirs. Tapirs come from the horse and rhinoceros families. They use their long nose and upper lip in the same way an elephant uses their trunk.

Making noises is another way to attract attention in the dark, this is the reason rainforests are so noisy.

Hidden Dangers

Lurking in the depths of the jungle, are animals and plants equipped with lethal, foul-tasting poisons. They either make the poison themselves or use what is in their food. Animals advertise that they are dangerous with bright colours.

Venomous creatures, such as snakes and spiders, need powerful venom to subdue prey that might inflict injury during a struggle.



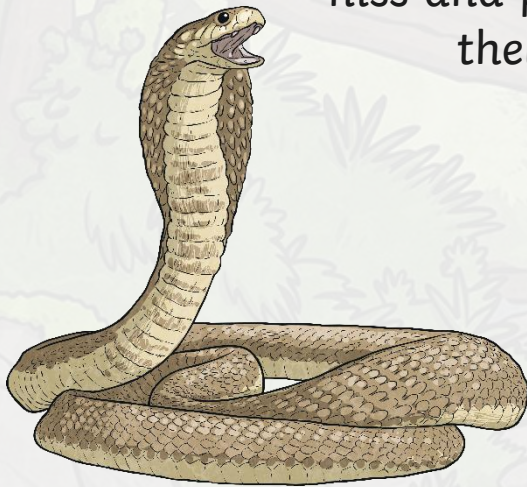
Plants contain poison to prevent herbivores from eating their foliage. The only indication that their leaves are poisonous is their bad smell and taste. Animals soon learn not to eat them!



Hidden Dangers

Cobra

The cobra is very poisonous. It hunts at dusk and in the early morning. Its front fangs inject a highly toxic venom. The poison is also fatal to people. When threatened, cobras rear up, hiss and puff out their hood.



African Giant Swallowtail

This is an enormous butterfly, it can have a wingspan up to 10 inches. It is very poisonous and is completely avoided by all its enemies.

Poison Plant

If a plant loses all its leaves, it is unable to take in carbon dioxide and make food. The leaves of the climbing “passion flower” plant contain several poisonous chemicals. Mammals will not eat it.

